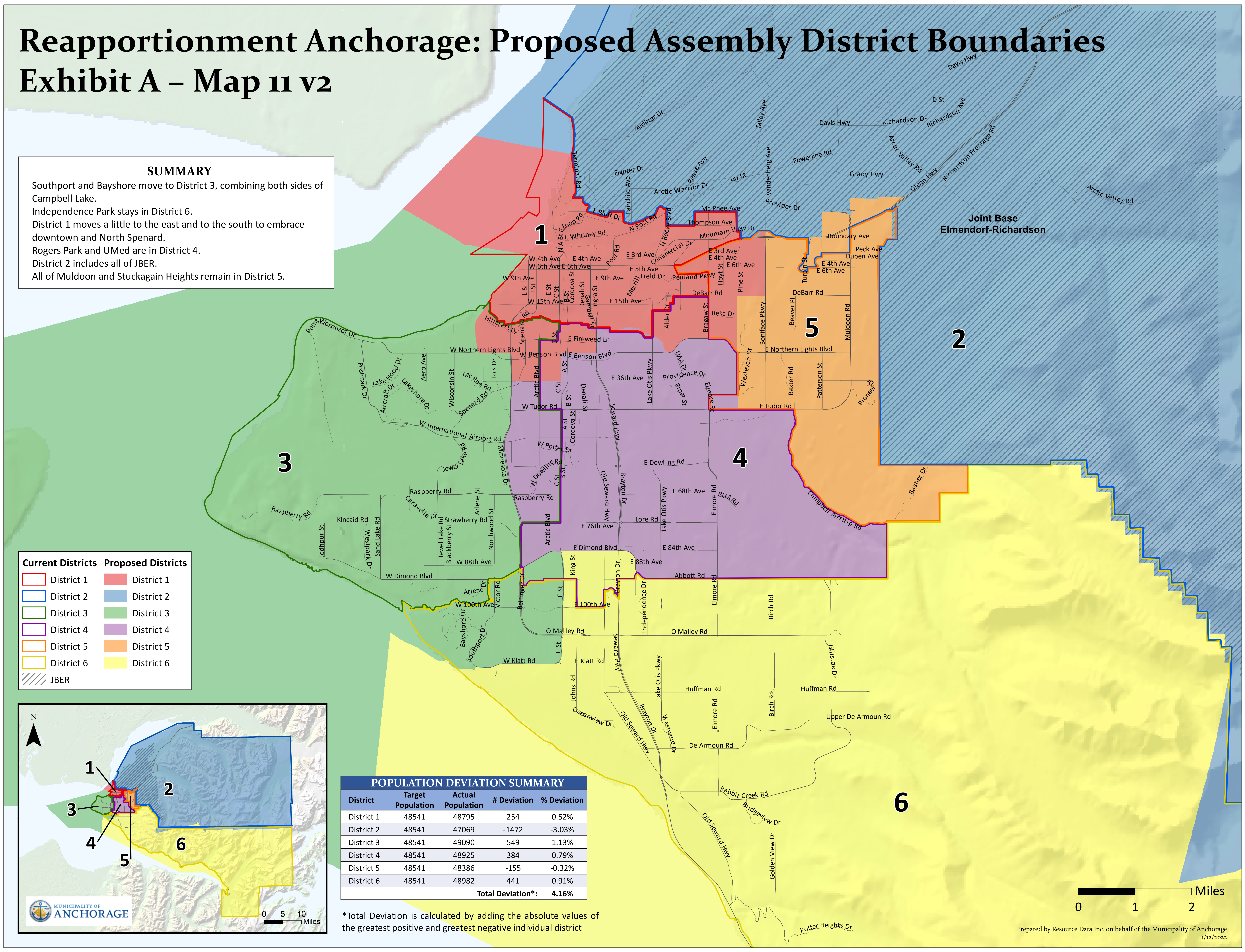


Reapportionment Anchorage: Proposed Assembly District Boundaries

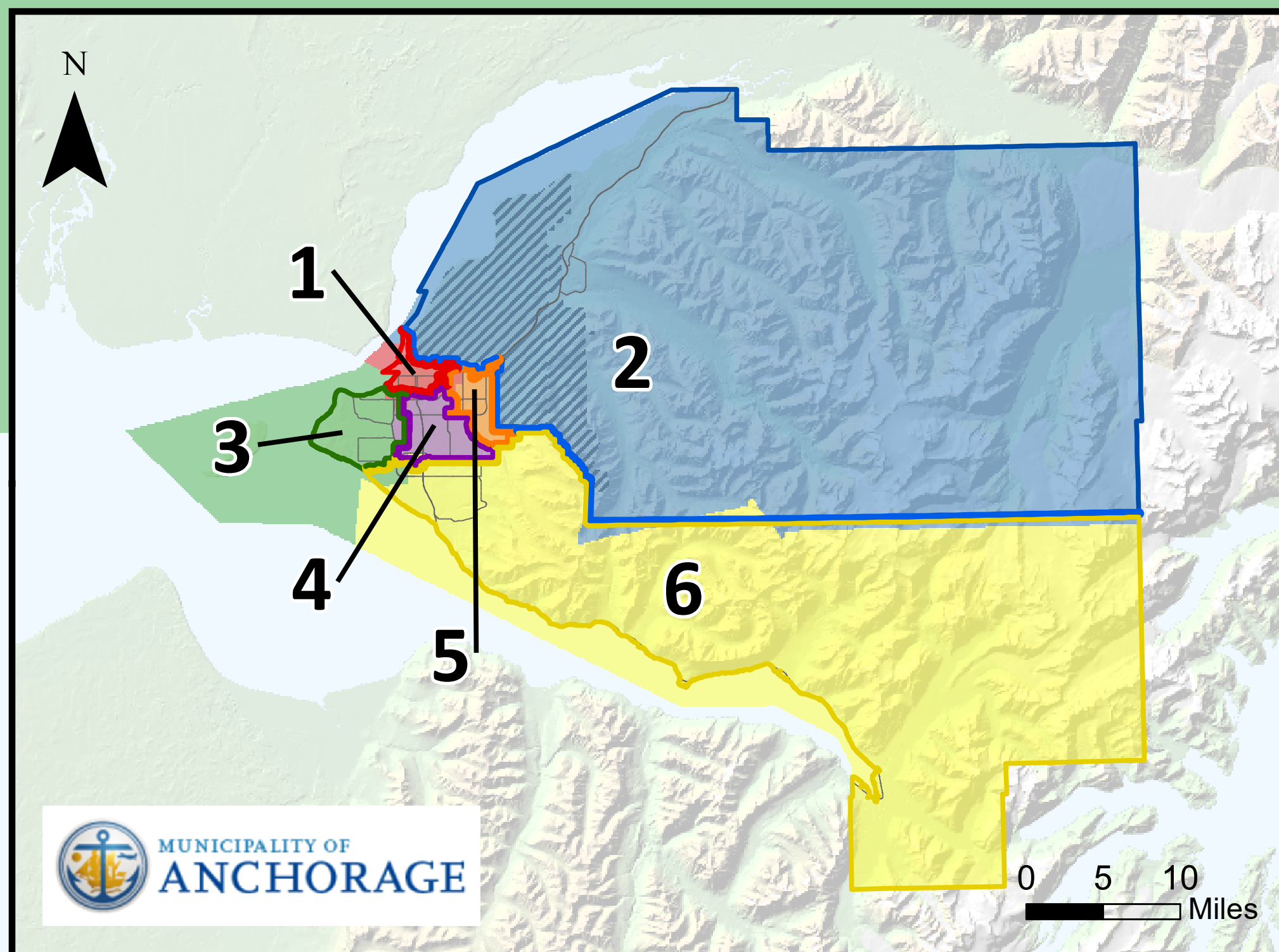
Exhibit A – Map 11 v2

SUMMARY

Southport and Bayshore move to District 3, combining both sides of Campbell Lake.
 Independence Park stays in District 6.
 District 1 moves a little to the east and to the south to embrace downtown and North Spenard.
 Rogers Park and UMed are in District 4.
 District 2 includes all of JBER.
 All of Muldoon and Stuckagain Heights remain in District 5.



Current Districts	Proposed Districts
District 1	District 1
District 2	District 2
District 3	District 3
District 4	District 4
District 5	District 5
District 6	District 6
JBER	



POPULATION DEVIATION SUMMARY				
District	Target Population	Actual Population	# Deviation	% Deviation
District 1	48541	48795	254	0.52%
District 2	48541	47069	-1472	-3.03%
District 3	48541	49090	549	1.13%
District 4	48541	48925	384	0.79%
District 5	48541	48386	-155	-0.32%
District 6	48541	48982	441	0.91%
Total Deviation*:			416%	

*Total Deviation is calculated by adding the absolute values of the greatest positive and greatest negative individual district

